

Lexia-3 Citroen V45 Activation Steps

In this PDF, we show you how to activate lexia-3 for Citroen V45 step by step.



Lexia3

By

ACTIA® 

Installation of your application was successful.
Validate to continue.



The Lexia office 3.1 4.5


CITROËN Activation of Lexia 3 diagnostic tools

WARNING

Do you wish to search for new updates?

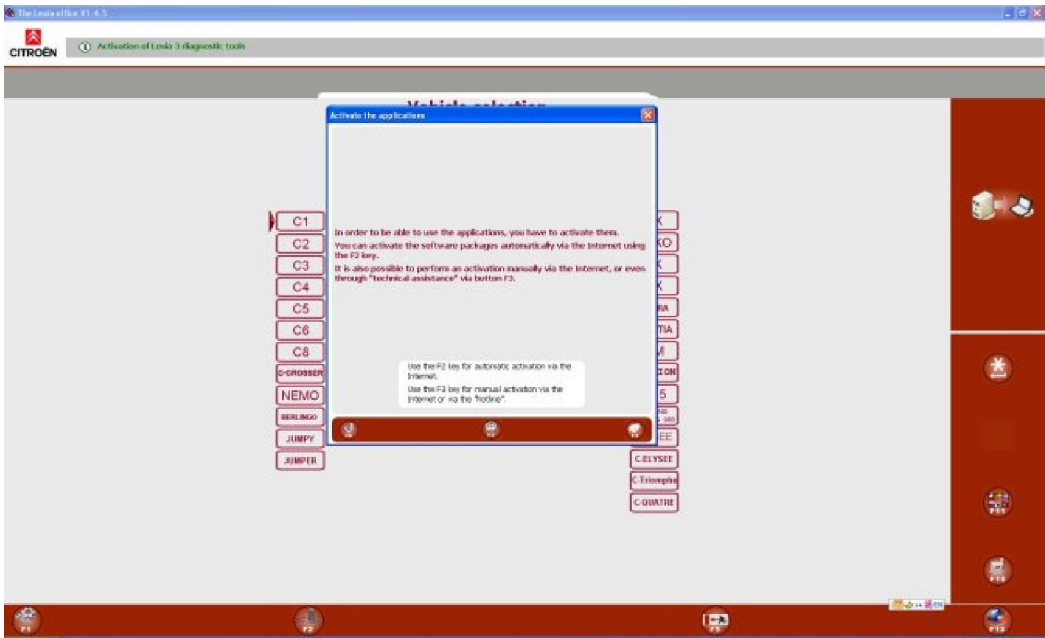
Validate to continue.
Use the F5 key to cancel.

C5
C6
C8
C-CROSSER
NEMO
BERLINGO
JUMPY
JUMPER



AX
SAXO
BX
ZX
XSARA
XANTIA
XM
EVAZON
C15
FUSION
REPOUSSE
ELYSEE
C-ELYSEE
C-ELYSÉE
C-QUATRE

ction



Vehicle selection

Activate the applications

You will activate the applications.
Please enter your RRDI code.
Then please confirm to start activation.

001

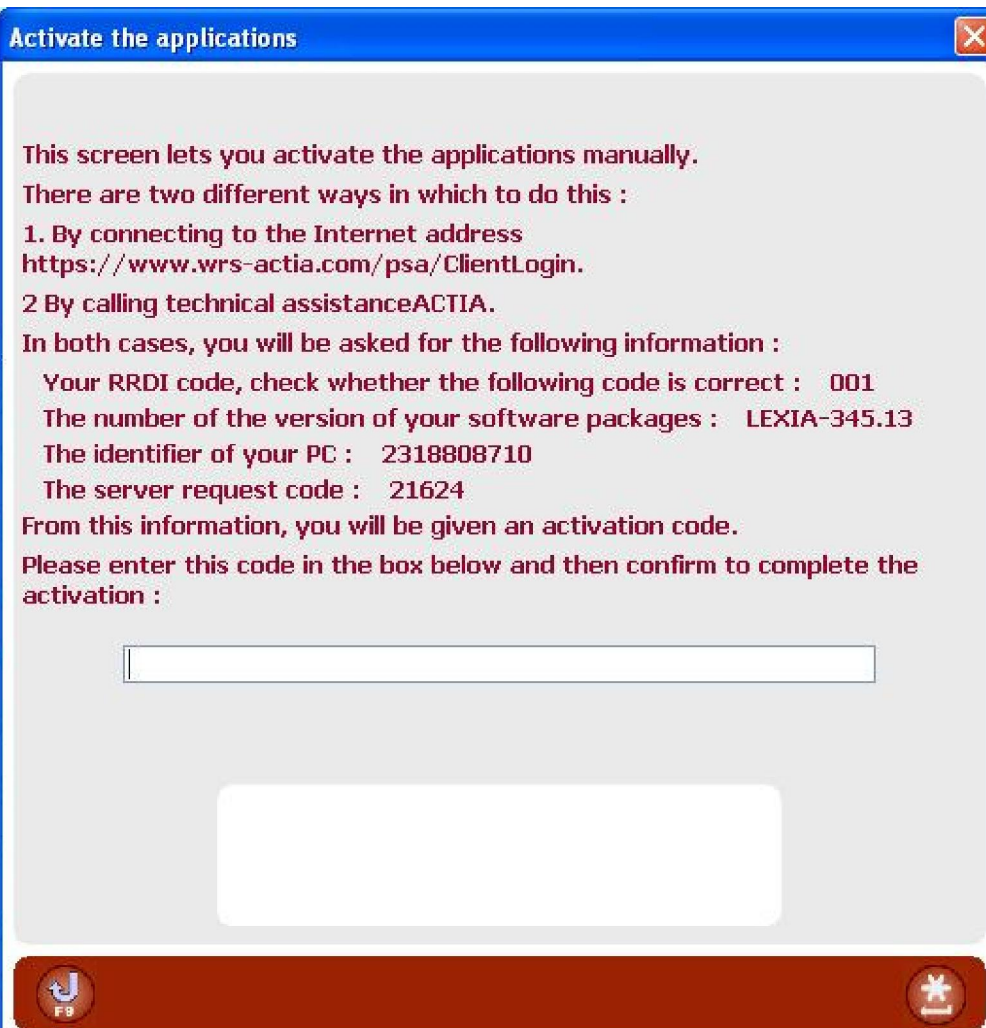
Confirmation of your RRDI code :

001

Information on your RRDI code.

- C1
- C2
- C3
- C4
- C5
- C6
- C8
- C-CROSSER
- NEMO
- BERLINGO
- JUMPY
- JUMPER

- K
- KO
- K
- K
- RA
- TIA
- M
- ION
- 5
- NG
- 988
- EE
- C-ELYSEE
- C-Triomphe
- C-QUATRE



Vehicle selection

Activate the applications

This screen lets you activate the applications manually.

There are two different ways in which to do this :

1. By connecting to the Internet address
<https://www.wrs-actia.com/psa/ClientLogin>.
- 2 By calling technical assistanceACTIA.

In both cases, you will be asked for the following information :

- Your RRDI code, check whether the following code is correct : 001
- The number of the version of your software packages : LEXIA-345.13
- The identifier of your PC : 2318808710
- The server request code : 21624

From this information, you will be given an activation code.

Please enter this code in the box below and then confirm to complete the activation :

7C85-50A6-13AB-D447-B03C-ED6F-B82A-4912

PPS2000

File Help

Your customer code	001	Get Code Exit
Identifier of your PC	2318808710	
Number of the version	LEXIA-345	
Server request code	21624	

7C85-50A6-13AB-D447-B03C-ED6F-B82A-4912

Peugeot Planet Office

